

# Domestic Membrane Gas Meter with Steel Casing

IoT LoRaWAN Sensor



## Description

The movement is integrated with mold and injection, and the structure is simple; The whole movement has only 27 kinds of 45 parts, reduce the number of parts, reduce accumulated errors to ensure the accuracy and reliability of measurement; The rotary distribution structure is adopted, which runs smoothly, overcomes the defects of reciprocating distribution structure and enhances the measurement reliability; The rotation is stable and never leaks, thus ensuring the safety performance of the product; The rotation of the movement transmission mechanism is transmitted to the counter outside the shell through magnetic force, ensuring accurate measurement, stable performance and good consistency of repeated detection; The internal control indication error index is  $\pm 1\%$ , which can ensure that the detection in different regions can be qualified; The surface of the shell is treated with plastic spraying, which has bright color, beautiful appearance and good corrosion resistance. It is designed with a variety of structures and devices to prevent external interference and damage.

## Features of HKT DC-10

- High measurement accuracy. The movement redesigns the rotating volume, and the difference between the diaphragm volume and the standard volume is less than 10%, so the change of the rotating volume will be very small within the size error range of each part, improve the accuracy of measurement;
- High stability and good consistency of repeat detection. Unique diaphragm limit and forced diaphragm turnover device is adopt. The limit of each movement of the diaphragm is at the same position, so that each movement of the diaphragm is filled with the same amount of gas, even after multiple move

- ments and testing, the error of multiple detection is greatly reduced, and the stability of the meter and the consistency of repeated detection are improved;
- Good durability. The low-temperature diaphragm is adopted, and has very good softness, and will not deform after multiple operations, so that the rotation volume will not change too much, and the durability of the meter is greatly improved.

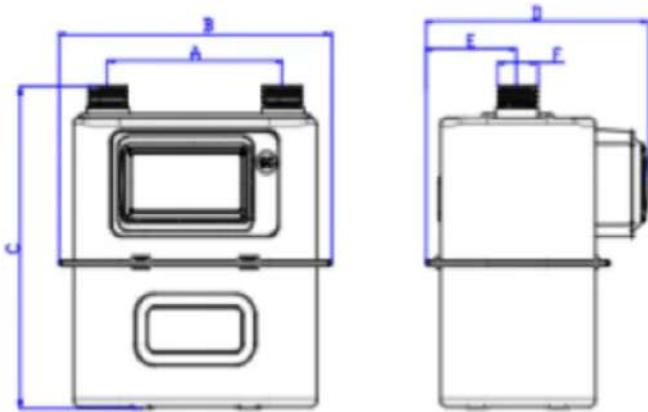
### **HKT provides customized services:**

- ODM
- Pre-sales & After-sales Services
- Technology Support

## Specification

Parameters	Description		
The performance parameters	G1.6	G2.5	G4
Minimum flow	0.016M <sup>3</sup> /h	0.025M <sup>3</sup> /h	0.04M <sup>3</sup> /h
Startup flow	≤0.003M <sup>3</sup> /h	≤0.005M <sup>3</sup> /h	≤0.005M <sup>3</sup> /h
Maximum flow	2.5M <sup>3</sup> /h	4M <sup>3</sup> /h	6M <sup>3</sup> /h
Cyclotron volume (Vc)	1.2dm <sup>3</sup>		
Maximum allowable error	(0.1q <sub>max</sub> ≤q≤q <sub>max</sub> )±1.5% (q <sub>min</sub> ≤q≤0.1q <sub>max</sub> ) ±3%		
Maximum working pressure	≤50kPa		
Pressure loss	≤200kPa		
Sealing	75 kPa hold pressure for 3 minutes without leakage		
Durability	Run for 2000 hours,meet the above performance indicators		
Ambient Temperature Range	-10° ~ 40°		
Center distance of meter joint	130mm		
Joint Screw	M30*2mm		
External connection screw thread	DN15		
Outline Dimensions (L*B*H)	203mm x 130mm x 225mm		
Weight	2kg		
Ingress Protection	IP54		
Installation	3M glue fixed or screw fixed or screw fixed wall mounting		
Communication	Standard LoRaWAN Protocol		

## Dimensions



Air flow direction	Left meter(left in and right out) Right meter(right in and left our)
A(center distance)	130mm
B	203mm
C	225mm
D	166mm
E	68.5mm
F(external connection screw thread)	M30*2

## Packing List

Name	Quantity
Membrane gas meter	1
Coupling,sealing washer (optional)	2